

Welcome to Bavarian Forest National Park

Unspoilt nature has priority over human use in national parks. Nature can flourish here according to its own laws.

As our motto **"LET NATURE BE NATURE"** suggests, forested landscapes unique in respect of their structure and animal and plant kingdoms and clearly different

DISCOVER THE VIRGIN FOREST OF TOMORROW

processes of growth and decay in forest ecosystems are given free rein here and that dead trees or trees uprooted by storms remain in their natural environment.

Allowing this wild nature to grow, to research it, but also bringing this experience to life for people is part of the work of our national park.

We invite you to explore the wild forests and the unspoilt nature of our national park.
You are warmly welcomed as our guest.

Franz Leibl
Dr. Franz Leibl,
Director of Bavarian Forest National Park

Facts and Figures



TASKS:
Conservation through protection of natural processes, research, education, and recreation

GENUINELY A NATIONAL PARK

Established in **1970**, Bavarian Forest National Park is Germany's first and oldest national park.

Through to the year **2027** nature is to be left to its own devices on **75 %** of the park's territory and as such be free of human influence. Currently, this is the case for approximately **70 %** of the national park area. This comprehensive protection of natural processes is the most important internationally recognised seal of quality for evaluating large protected areas.



Typical habitats and their residents

MOUNTAIN SPRUCE FOREST – a touch of Taiga
Among the exceptional features of Bavarian Forest National Park are the natural spruce forests in the areas at higher altitude. They remind us of the Taiga forests and are found only in the higher, harsher locations of the mountains above 1,100 vertical meters and in the Alps. Snow can often be found in these areas well into the early summer months.

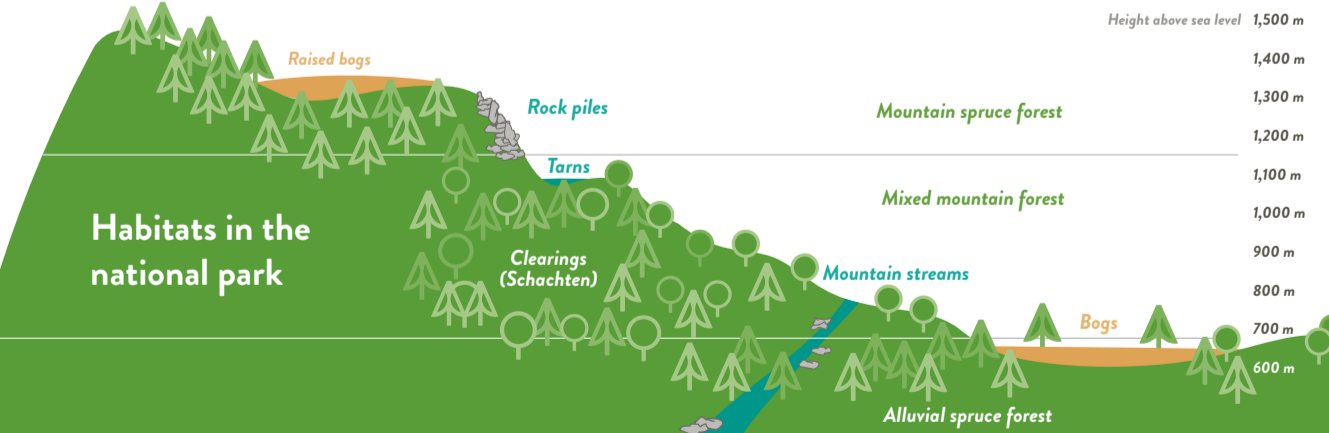
MIXED MOUNTAIN FORESTS – a colourful community
The southern and south western slopes are much warmer than the areas at high altitude. In addition to the spruce, silver fir, copper beech, and sycamore maple are also to be found here. In terms of area, these mixed forests represent the most significant habitat in our national park. Here, autumn in particular can be an amazing experience with its Bavarian brand of Indian Summer.



RAISED BOGS – a place for survival artists
Raised bogs have an aura of the unusual: mosses, grasses and dwarf shrubs predominate here in alternation with water-filled pools and dwarf pines. Only rain water is available to plants in the high raised bogs as large peat bodies cut them off from other sources of water and nutrients.

SCHACHTEN (CLEARINGS) – the magic of old cultural landscapes
Known as "islands in the forest sea" the Schachten are high altitude unforested areas that came into being as a result of historic pasture use. Matt-grass and flower rich meadows as well as gnarled, often centuries old trees display their particular charm and provide varied habitats for numerous and rare species of insects, birds, reptiles, and bats.

ALLUVIAL SPRUCE FOREST – living on wet ground
Cold air flows down from the mountain slopes and comes to rest in damp valley basins. Here, ground frosts even occur in summer and, as in the higher areas, the spruce characterises the forest. Damp and low temperatures mean that only very few firs, rowans and moor birches get to grow old with the spruce.



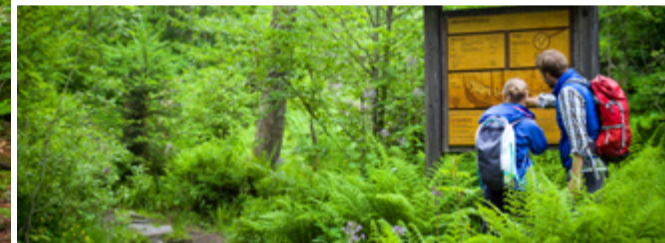
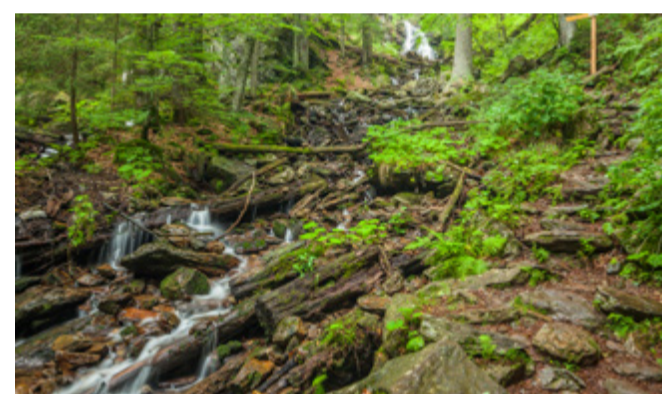
AWARDS:
The national park has received many awards. Its distinctions include ...
... the European Diploma, which recognises protected areas with outstanding scientific, cultural and aesthetic characteristics as well as a commensurate conservation concept.
... the Transboundary Park Certificate together with Sumava National Park, with which it forms Europe's largest protected forest area.

VISITOR FACILITIES:
2 national park centres, each with an information centre and animal enclosures, 1 forest history museum, 1 red deer enclosure, 6 tourist information points in national park municipalities, 2 youth education facilities, 1 forest playground, 1 hiking park with a lynx playground, 1 youth camping site

VISITOR NUMBERS: 1.4 million per year
PROPRIETOR: Free State of Bavaria

Scenic in all seasons

Summer is the high season for animals and plants in our national park, just as it is for hikers and bikers. A network of many hundred kilometres of hiking and cycling trails makes our national park accessible. Our experience trails with their many information boards enable you to get to know the most beautiful and attractive places.



In winter the nature is very much snowbound and many plant and animal species hibernate, waiting for spring. The national park offers our visitors many attractive opportunities in the cold time of year. Now you can explore the wild winter forest on cross country skies, hiking or on snow shoes. Please respect the winter peace, which nature needs, and use only the marked trails. Information on the prepared cross country skiing tracks, ploughed winter hiking trails and other winter activities can be found in the national park centres as well as in all tourist information points.

You have not yet experienced forest like this

DISCOVER THE EXTRAORDINARY

With our guided tours and events programme that runs throughout the year we would like to make our national park yet more accessible and draw your attention to its special characteristics.

National park experts can accompany you on a range of guided hikes and bicycle tours. In personal conversations you can learn many exciting things directly in the field and have the opportunity to ask your own questions.

Special events for children, vivid expert lectures as well as cultural events in the national park centres round out the national park's programme.

An overview of current events can be found on the calendar on our homepage:
www.nationalpark-bayerischer-wald.de



LOCATION: around 50 km north east of Passau along the main ridge of the Bavarian Forest mountains, directly on the border to the Czech Republic

TRAIL NETWORK:

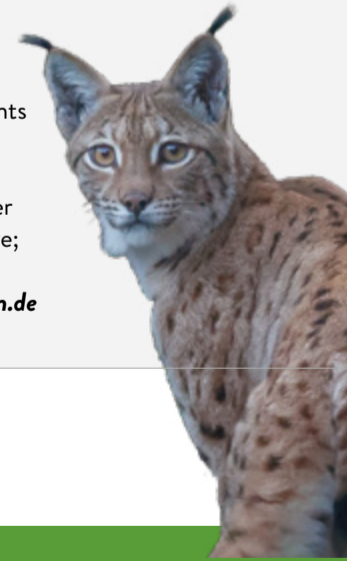


NATIONAL PARK FOR ALL

The national park centres as well as our forest history museum can be experienced with all senses, at any age and in all seasons. Safe paths with limited inclines make it easier for people with a disability, senior citizens and families with pushchairs to visit the nearby natural attractions.

Our staff members in the park are happy to discuss your individual requirements and help further.

We're also happy to answer questions before you arrive; just send an e-mail to:
npfueralle@npv-bw.bayern.de



Nationalparkverwaltung Bayerischer Wald
www.nationalpark-bayerischer-wald.de

The App! For national park explorers.



- Hiking tips
- Trails
- National Park for All
- Visitor centres
- Animal enclosures
- Events
- Trail condition reports
- Public transport information
- Hotels and guesthouses



Downloads for iPhone and Android.

Scan the QR code with your smartphone and you'll receive the **FREE** national park app. All information is provided in German.

Publisher: Nationalparkverwaltung Bayerischer Wald
Freunger Straße 2, 94481 Grafenau
www.nationalpark-bayerischer-wald.de
poststelle@npv-bw.bayern.de
Internet:
E-Mail:
Print: Druck & Service Garhammer GmbH, Regen
Graphic Design: Freunde der guten Idee GmbH, Freyung
Photo credits: Christian Binder, Daniela Blöching, Michael Göggelmann, Harald Grunwald, Gert Krautbauer - bayern.by, Franz Leibl, Dietmar Nill, Elke Ohland, Rainer Pöhlmann, Sascha Rösner, Rainer Simonis, Gregor Wolf
Published: June 2021
© Bavarian Forest National Park Administration, all rights reserved
Printed on paper made from 100 % recycled paper

This leaflet is published within the framework of the Bavarian state government's public relations programme. It is provided free of charge, any further distribution in return for payment is forbidden. This leaflet has been compiled with great care. Nonetheless a guarantee of its accuracy and completeness cannot be given. We are not responsible for the content of third party internet sites.



BAYERN | DIREKT is your direct link to the Bavarian state government. You can obtain information and brochures, information on current topics and internet resources as well as advice on authorities, which office is responsible for particular matters and contact persons at the Bavarian state government by telephoning +49 89 122220 or e-mailing direct@bayern.de.

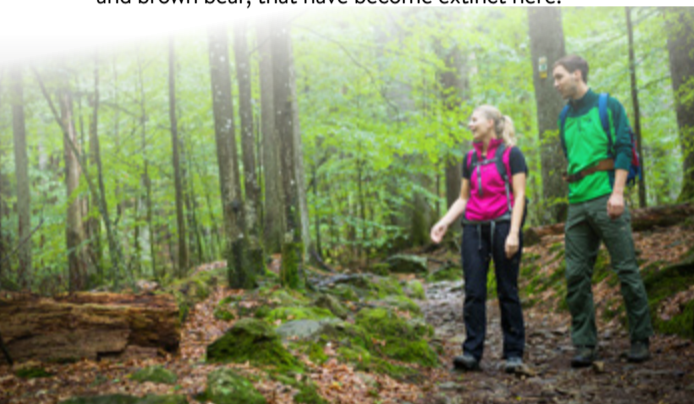
Nationale Naturlandschaften
Membership to the "Nationale Naturlandschaften e.V.", the umbrella association for large nature protection sites in Germany



Always well informed

Begin your national park experience in the Lusen National Park Centre, the Falkenstein National Park Centre, the Forest History Museum in St. Oswald, or visit one of the national park tourist information points. Here you can obtain many tips and recommendations and initial insights into the national park idea, the history of our national park as well as our native flora and fauna.

Our animal enclosures in particular are worth a visit at any time of year: they invite you to observe shy and sometimes also very rare wild animal species up close, which can only be spotted with a lot of luck in the wild, such as lynx and capercaillie, or species, such as wisent and brown bear, that have become extinct here.



Visitor facilities



Falkenstein National Park Centre

HAUS ZUR WILDNIS
with permanent and temporary exhibitions
ANIMAL ENCLOSURES
with 3.5 km of hiking trails presenting 4 different species
STONE AGE CAVE
to travel back in time into the region's ancient history

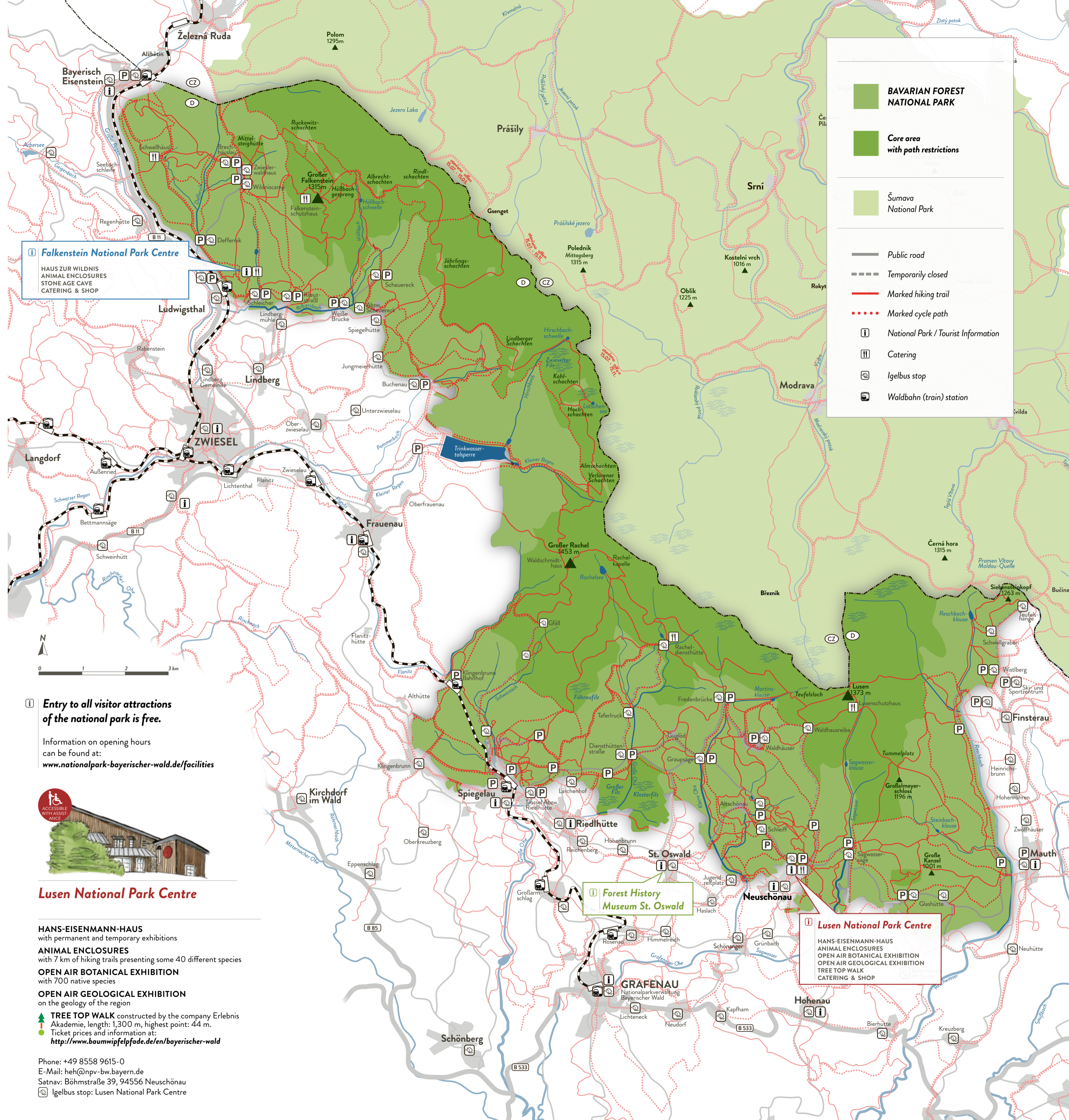
Phone: +49 9922 5002-0
E-Mail: hzw@npv-bw.bayern.de
Satnav: Eisensteiner Straße, 94227 Lindberg
Igelbus stop and Waldbahn station: Ludwigsthal



Forest History Museum St. Oswald

Permanent exhibition on the origins, land use and cultural history of the national park region as well as different temporary exhibitions

Phone: +49 8552 974889-0
E-Mail: wgm@npv-bw.bayern.de
Satnav: Klosterallee 4, 94568 St. Oswald
Igelbus stop: St. Oswald Gh. Goldener Steig



Falkenstein National Park Centre

HAUS ZUR WILDNIS
ANIMAL ENCLOSURES
STONE AGE CAVE
CATERING & SHOP

Entry to all visitor attractions of the national park is free.

Information on opening hours can be found at:
www.nationalpark-bayerischer-wald.de/facilities



Lusen National Park Centre

HANS-EISENMANN-HAUS
with permanent and temporary exhibitions
ANIMAL ENCLOSURES
with 7 km of hiking trails presenting some 40 different species
OPEN AIR BOTANICAL EXHIBITION
with 700 native species
OPEN AIR GEOLOGICAL EXHIBITION
on the geology of the region
TREE TOP WALK constructed by the company Erlebnis Akademie, length: 1,300 m, highest point: 44 m.
Ticket prices and information at:
<http://www.baumwipfelpfade.de/en/bayerischer-wald>

Phone: +49 8558 9615-0
E-Mail: heh@npv-bw.bayern.de
Satnav: Böhmerstraße 39, 94556 Neuschönau
Igelbus stop: Lusen National Park Centre

BAVARIAN FOREST NATIONAL PARK

Core area with path restrictions

Šumava National Park

Public road

Temporarily closed

Marked hiking trail

Marked cycle path

National Park / Tourist Information

Catering

Igelbus stop

Waldbahn (train) station

Doing the right thing and going the right way: Conduct and Signposting

Visitors belong in the national park just like the nature that they've come to experience. For your own safety and for the protection of the national park there are some rules though. Corresponding information signs can be found in the park. Here is a selection of the most important advice:

- Always be well equipped: bring a map, sturdy footwear, drinks, first aid kit, weatherproof clothing.
- Beware of falling trees and dead branches! The use of the trails is at your own risk; when there are strong winds you are advised to leave the forest for your own safety!
- There are path restrictions in certain areas of the park for the protection of endangered animal and plant species.
- Cycling only on marked cycle routes.
- Do not take anything.
- Dogs should not be off the lead.
- Do not disturb the animals.
- No overnight stays in the open air.
- Parking only in designated car parks.
- Don't leave anything behind.
- Feeding the animals is forbidden.
- Campfires only in designated spots.
- No bathing allowed.

To help you find your way when hiking and cycling we have carefully signposted tours of the national park.

Here are the most important details about our signs:

- Animal symbol on a yellow background: signposts a circular hiking trail with the path leading back to the departure point.
- Plant symbol on a white background: signposts a linear hiking trail; the path does not lead back to the departure point. For a circular tour you will need to combine a number of marked routes or use the Igelbus service.
- Different symbols and backgrounds: long distance hiking trail, which extends beyond the national park boundaries.
- Cyclist, possibly with a number of a cycle tour: designated cycle path.

Experience more, naturally: National Park Partners



When it comes to your holiday in Bavarian Forest National Park, our National Park Partners are very knowledgeable contact persons. In the gastronomy, accommodation and public transport branches they are well known for environmental awareness and providing quality services. They also feel a special bond to the national park and the region.

Detailed information can be found at:
www.nationalpark-partner.com

We would really like to draw your attention to the public transport services in the national park region, which facilitates environmentally friendly travel in the area:

The **Waldbahn railway** opens up the national park region to visitors very well. From May to October, the **Igelbus service** will carry you and your bike almost every hour to the national park's visitor attractions and also to many excursion and hiking departure points. You can also get to many destinations in winter by using the winter Igelbus service.

With the **Guest Service - Environment Ticket (GUTi)** holidaymakers can use the bus and train free of charge. The GUTi is valid as a ticket for any number of journeys in the whole of the Bayerwald-Ticket tariff area for the duration of your stay. Your hosts or the nearest tourist information centre will be able to provide you with information.

Further details at:
www.bayerwald-ticket.com

